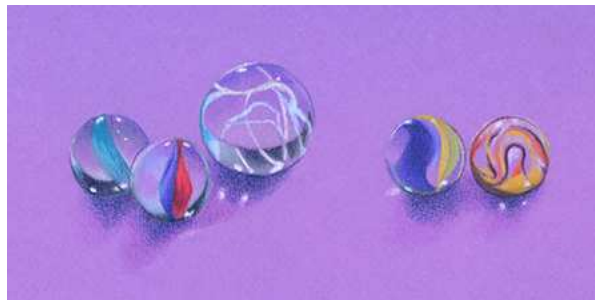


# The Portsmouth Arts Guild Spring Classes, 2010



## Colored Pencil and Watercolor Pencil with Kendra Ferreira



Participants in this class will learn the many versatile ways of applying colored pencil and water color pencil to paper and board. We will learn to work with two mediums separately as well as combining water color pencils and dry colored pencils, practicing under paintings with water color pencils and then layering and burnishing techniques with dry colored pencils. Each week will be a different project, and we will work from still life set up.

Instructor:

Kendra Ferreira has a B.A. in Fine Arts from the Massachusetts College of Art in Boston. She has won numerous awards throughout the country, including awards from the Colored Pencil Society of America. She has taught at several art associations and galleries, and has been a profiled artist in the local media. Visit her website at [www.kjfdesign.com](http://www.kjfdesign.com).

**Date: 6**

**Wednesdays, Mar. 3, 10, 17, 24, 31, Apr. 7. Time: 9 am to noon Tuition: \$145, \$125 for PAG members. Continuing participants also welcome.**



## **Oil Painting for Beginners and Intermediate Artists with Carol Lynn Hall**

Composition and design will be fundamental factors. For beginners: Basic color development and brush techniques will be explored. For intermediates: Expansion on basic skills with an emphasis on depth in composition and emotional aspects of color.

Instructor: Carol Lynn Hall holds two degrees in art from Boston University and has done post-graduate work in drawing and painting at Mass College of Art and the Boston Museum School. After teaching art in Boston for 10 years, she taught for 15 years at Boston State College.

**Date: 4 Fridays, Mar. 12, 19, 26, Apr. 2 Time: 9:30-12:30**

**Tuition: \$100, \$90 for PAG members**

## **Beginners' Wheel-Throwing with Leigh-Ann Ramieri**

This is an introduction to wheel-throwing. Learn to prepare the clay, center, pull a cylinder and glaze finished pieces. Students can expect to complete several simple pieces from clay to glaze

Instructor:  
Leigh-Ann Ramieri graduated from RI College in 2008 with her BA in Studio Art. Her focus is primarily functional pottery, such as teapots and covered jars

**Date: Monday & Wednesday evenings, March 15, 18, 22, 24, 29, 31, April 5, 7, 12, 14, 19, 21 at MUDSTONE STUDIOS, 30 CUTLER ST., WARREN, RI.**

**Time: 6-9 pm with open studio on weekends, noon-4 pm**

**Tuition: \$240, \$200 for PAG members. Materials fee: \$25.**

## **Portrait and Figure Studio, monitored by Ellen Blomgren**

Join this six-week, all-day portrait and figure drawing/painting class. Open to all mediums and skill levels. No instruction—simply an opportunity to paint or draw from live models in a friendly and supportive atmosphere. The models will be clothed or nude, depending on the week.

**Date:** 6 Mondays, March 15, 22, 29, April 5, 12, 19.

**Time:** 9 am to 3 pm, with a half-hour break for lunch.

**Tuition:** \$160, \$140 for PAG members; half days \$85, \$75 for PAG members.

## **Creating a Backsplash/Mural with Ellen Blomgren**



Students can expect to complete a large tile installation. Learn relief sculpting techniques, glaze finishes and gluing/grouting tips.

**Instructor:** Ellen is a professional ceramic artist. She owns Mudstone Studios in Warren, RI, offering workshops and communal workspace. She is an artist/educator on the VSA and RISCA rosters and RISD CE instructor. See her work at [www.ellenblombren.com](http://www.ellenblombren.com).

**Date:** 6 Tuesdays, March 16, 23, 30, April 6, 13, 20

**Time:** 6 to 9pm AT MUDSTOME STUDIOS, 30 Cutler St., WARREN, RI Tuition \$175, \$150 for PAG members. Materials fee: \$50.

## **Japanese Calligraphy (Shodo) with Lois Erhartic**



The beauty of calligraphy lies in its simplicity and power. If you find yourself drawn to its mystique, come explore this graceful ancient art form. We will discuss the history and philosophy of Japanese calligraphy, and will learn and practice basic brush strokes and simple kanji characters. Discover how Japanese brushwork is a meditative practice that calms the spirit and frees the soul. No previous art experience necessary. A materials list will be provided upon registration

Instructor: Lois Erhartic studied Japanese Calligraphy at the Kaji Aso Studio in Boston and with Master Calligrapher Michiko Imai. She has exhibited there, at the Prudential Center in Boston, and locally. Calligraphy has had an enriching and joyful impact on her life. She is eager to help others discover its beauty and power.

**Date: Session I: 6 Thursdays, Mar. 18, 25, Apr. 1, 8, 15, 22**

**Session II: 6 Thursdays, Apr. 29, May 6, 13, 20, 27, June 3**

**Time: 9:30-11:30 am**

**Tuition: \$100, \$90 for PAG members. Materials fee \$30. Contact teacher for list.**

## **Basic Drawing for Beginners with Carol Lynn Hall**

This course will teach basic skills in drawing, including learning hand and eye control of what you see. Shape, values and textures will be emphasized.

Instructor: See "Oil Painting" above.

**Date: 2 Saturdays, Mar. 27 and Apr. 11 Time: 9:30 am to 12:30**

**Tuition: \$60, \$50 for PAG members**

**Hands-on Digital  
Photography Workshop  
with Cindy Horovitz  
Wilson & Eileen  
McCarney Muldoon**



Beginning and intermediate photographers with DSLR's will learn about digital and basic camera controls, e.g. ISO, F-stop, shutter speed, as well as compositional concepts. This hour-long introduction is followed by a photo session the field. The session concludes with an opportunity for students to look at their work and discuss results

Instructors: Eileen and Cindy have both been professional photographers for over 20 years. They belong to the Portsmouth Arts Guild, Newport Photo Guild, Wickford Art Assn., and Mystic Art Assn. They recently formed the Profundo Journeys Photo Workshop and brought 12 students to Italy for the purposes of photo and artistic development. See [www.profundojourneys.com](http://www.profundojourneys.com)

**Date: Wednesday, April 7 (raindate: April 14) Time: 4 to 8 pm  
Tuition: \$75, \$65 for PAG members**

**Painting a Small Still  
Life (any medium)  
with Kathleen Weber**

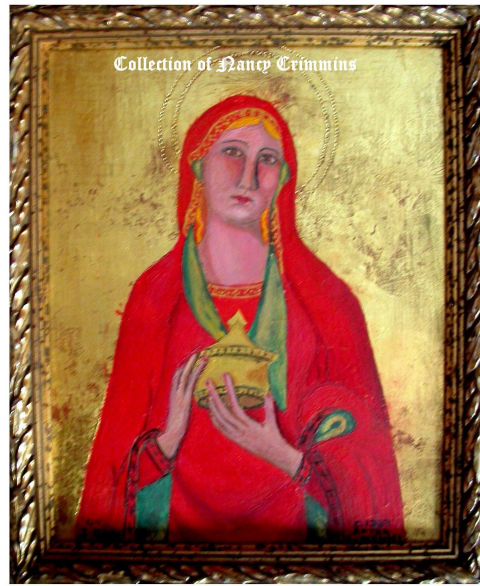


Students will set up a small still life with objects brought from home, e.g. flowers, fruit, ceramics, fabric, etc. We will discuss what makes a good composition. Students will do at least one value study before starting their finished painting. Some painting experience preferred

Instructor: Kathy Weber holds a BFA in painting from Umass/Dartmouth. She spent a number of years as a commercial artist, doing advertising layout and greeting card illustration. She now paints and teaches, and shows her work at several RI galleries. See [www.weberstudio.com](http://www.weberstudio.com).

**Date: Friday, April 9 Time: 9 am to 4 pm Tuition: \$65, \$55 for PAG members**

## Making Ancient and Medieval Mediums with Jay Egge



This course will cover Encaustic, Casein and Egg Tempera (with Flemish Oil Glazes) and also support preparation with traditional Gesso. Through demonstration and interactive lectures, students will gain a feel of mediums with brush application and other techniques. We might also explore coverage of mediums suggested by student interest at first session, such as Water Gilding

Instructor: Jay Egge has displayed mixed media, oil and pastel works in many venues including juried exhibitions. He is a resident artist at Uncommon Art Gallery in Bristol. He has also provided workshops and demonstrations at numerous galleries, continuing education classes as a guest artist, and artist organizations in southern Rhode Island.

**Date:** 2 Wednesdays, April 2 **Time:** 6:30-9:30 pm

**Tuition:** \$80, \$70 for PAG member

## **Monotype Printmaking Workshop with Suzanne Lewis**



A monotype is known as “the painterly print.” Students will paint images on a plate with inks or watercolor paints, then run their plate through a press to create a one-of-a-kind print. The class does not require printmaking experience and is a good transition from painting to printmaking

Instructor: An award-winning printmaker, Suzanne Lewis has a Master of Arts in Teaching and Certificate in Drawing and Painting Studies from the Rhode Island School of Design Continuing Education Program. She has been studying printmaking for eight years.

**Date: Saturday, Apr. 17 Time: 10 am to 4 pm**

**Tuition: \$70, \$60 for PAG members; materials fee: \$15**